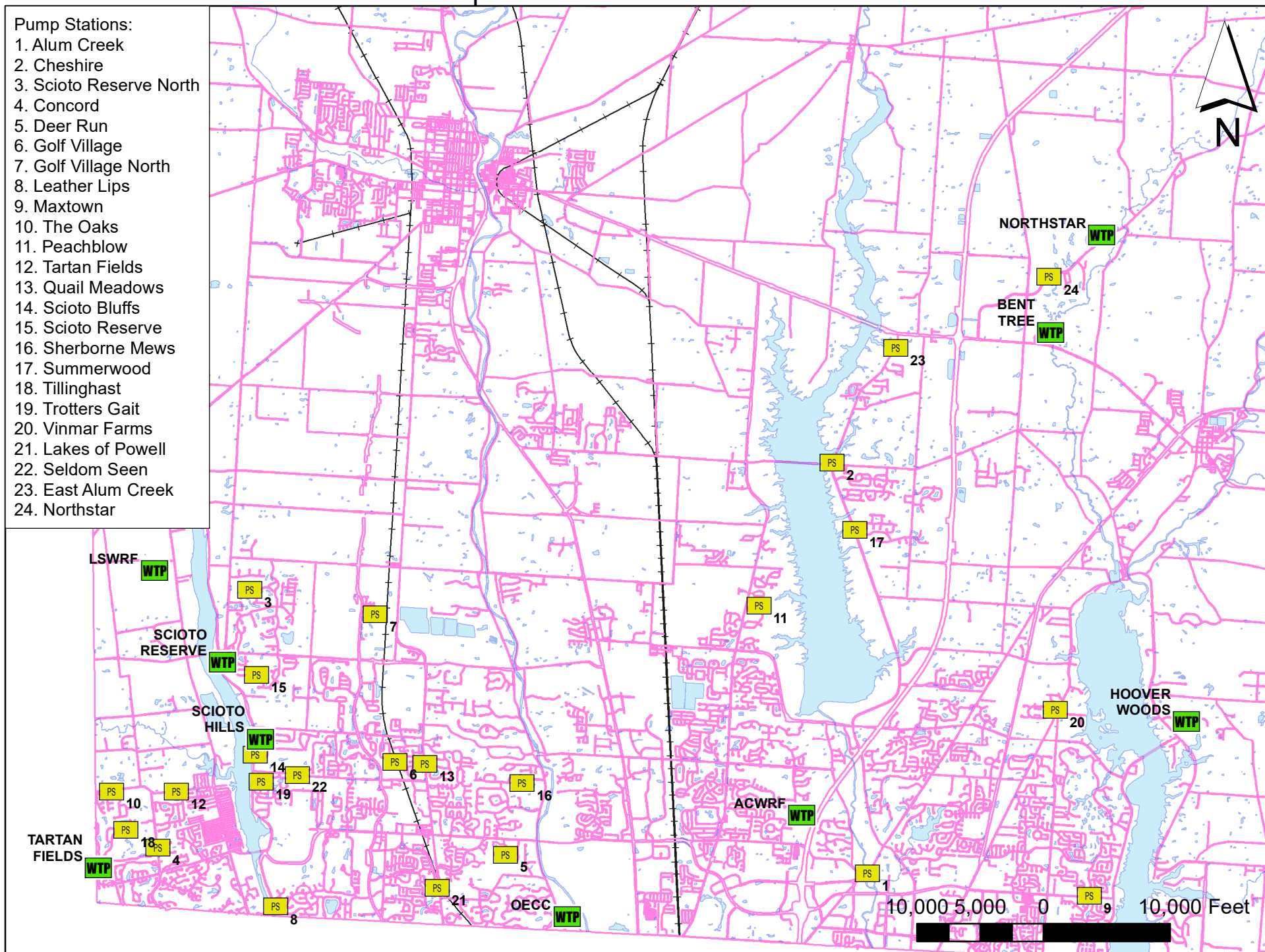


Pump Stations and Treatment Plants

- Pump Stations:
1. Alum Creek
 2. Cheshire
 3. Scioto Reserve North
 4. Concord
 5. Deer Run
 6. Golf Village
 7. Golf Village North
 8. Leather Lips
 9. Maxtown
 10. The Oaks
 11. Peachblow
 12. Tartan Fields
 13. Quail Meadows
 14. Scioto Bluffs
 15. Scioto Reserve
 16. Sherborne Mews
 17. Summerwood
 18. Tillinghast
 19. Trotters Gait
 20. Vinmar Farms
 21. Lakes of Powell
 22. Seldom Seen
 23. East Alum Creek
 24. Northstar

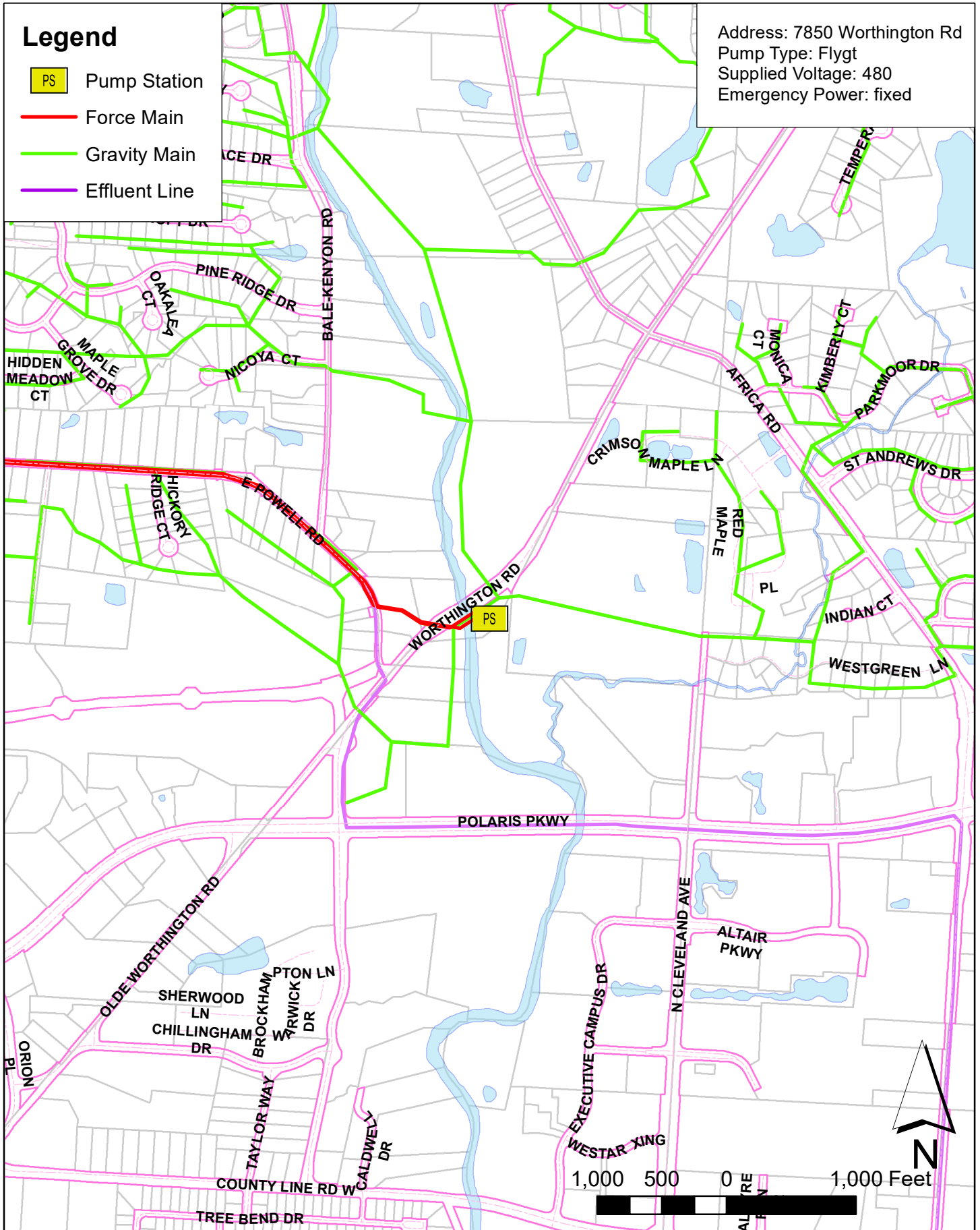


Alum Creek Pump Station

Address: 7850 Worthington Rd
 Pump Type: Flygt
 Supplied Voltage: 480
 Emergency Power: fixed

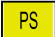



Legend

- PS Pump Station
- Force Main
- Gravity Main
- Effluent Line

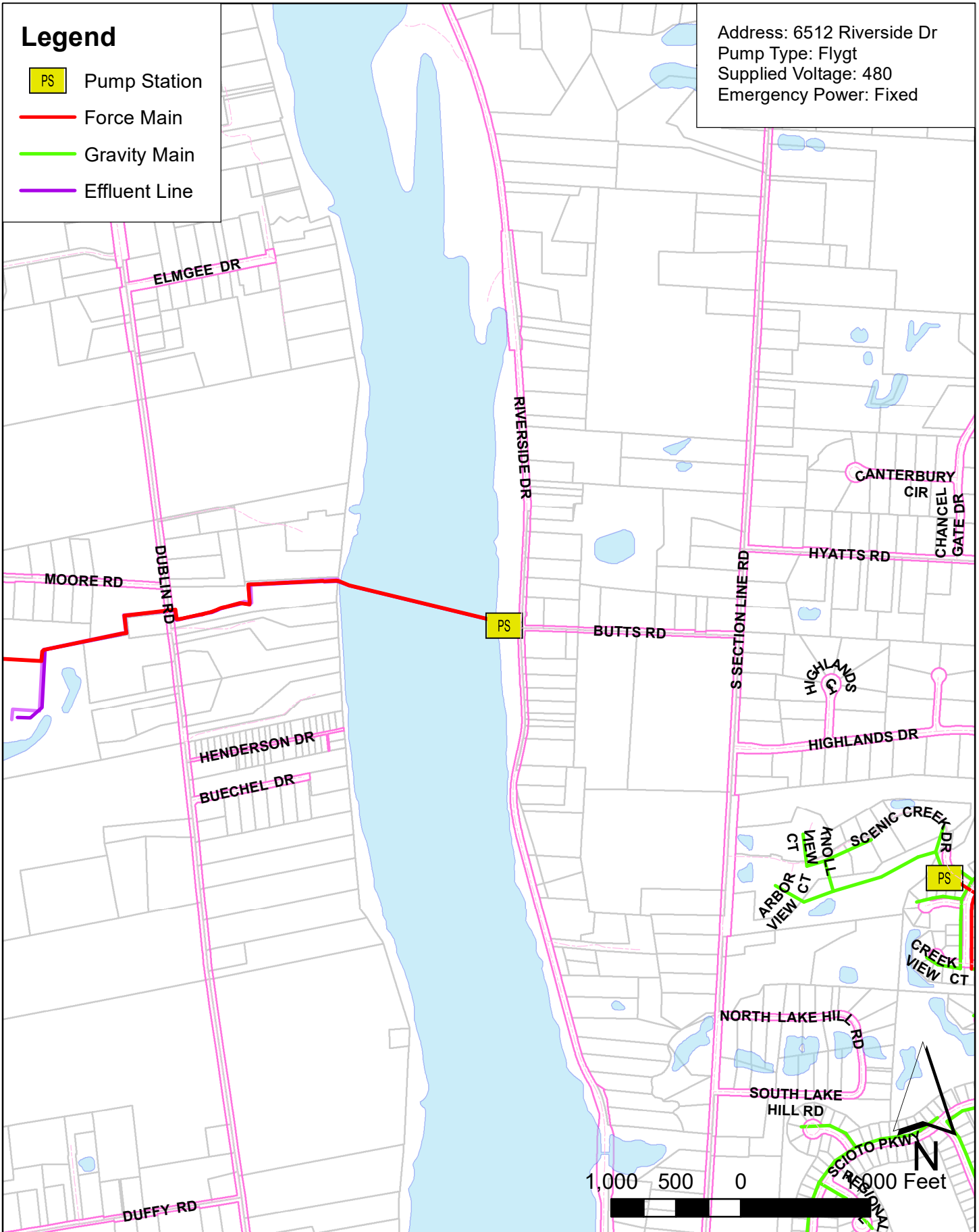


O'Shaughnessy Pump Station

Legend




-  Pump Station
-  Force Main
-  Gravity Main
-  Effluent Line

Address: 6512 Riverside Dr
Pump Type: Flygt
Supplied Voltage: 480
Emergency Power: Fixed

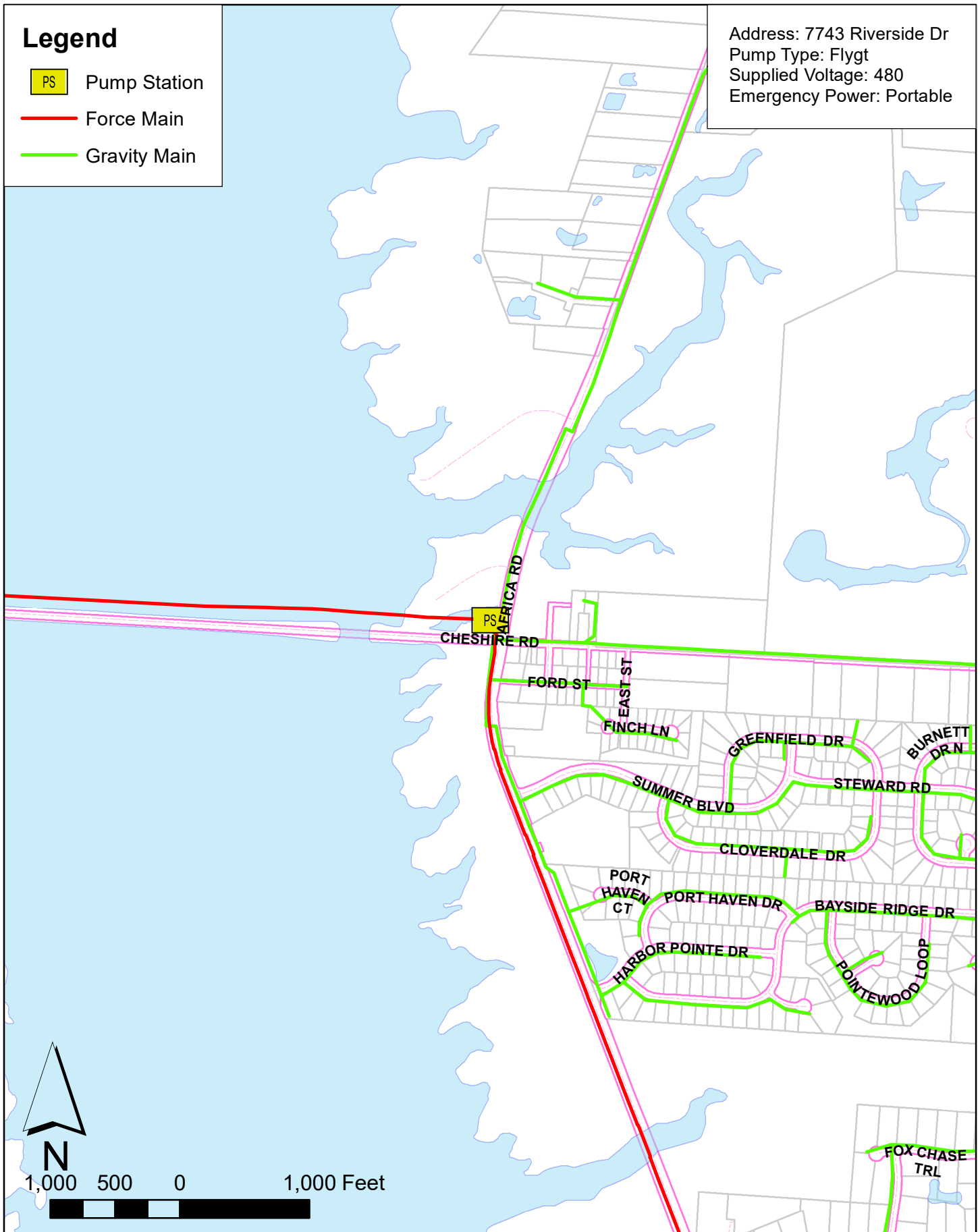


Cheshire Pump Station

Legend

-  Pump Station
-  Force Main
-  Gravity Main

Address: 7743 Riverside Dr
Pump Type: Flygt
Supplied Voltage: 480
Emergency Power: Portable

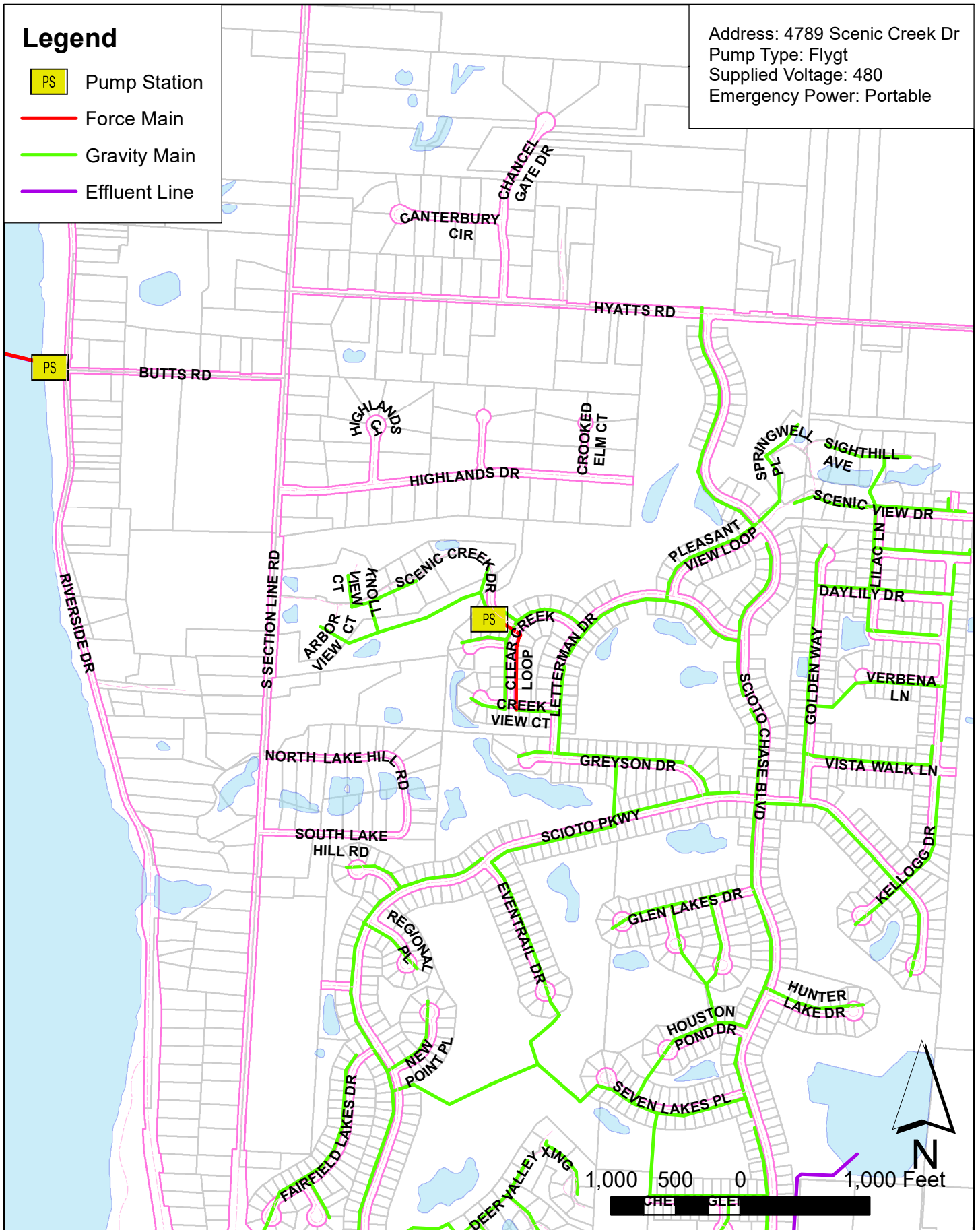


Clear Creek Pump Station

Legend

- PS Pump Station
- Force Main
- Gravity Main
- Effluent Line

Address: 4789 Scenic Creek Dr
 Pump Type: Flygt
 Supplied Voltage: 480
 Emergency Power: Portable

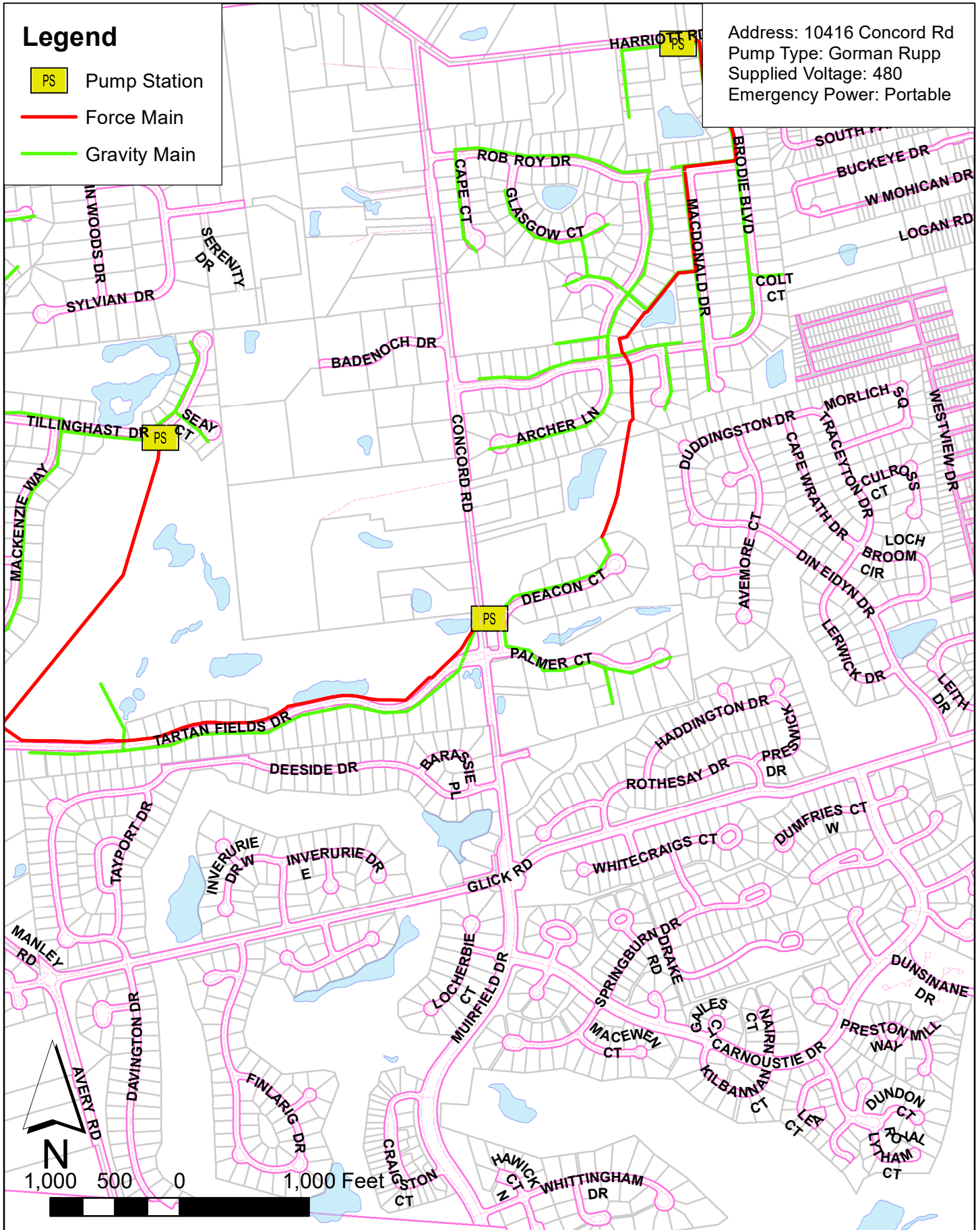


Concord Pump Station

Legend

- PS Pump Station
- Force Main
- Gravity Main

Address: 10416 Concord Rd
 Pump Type: Gorman Rupp
 Supplied Voltage: 480
 Emergency Power: Portable

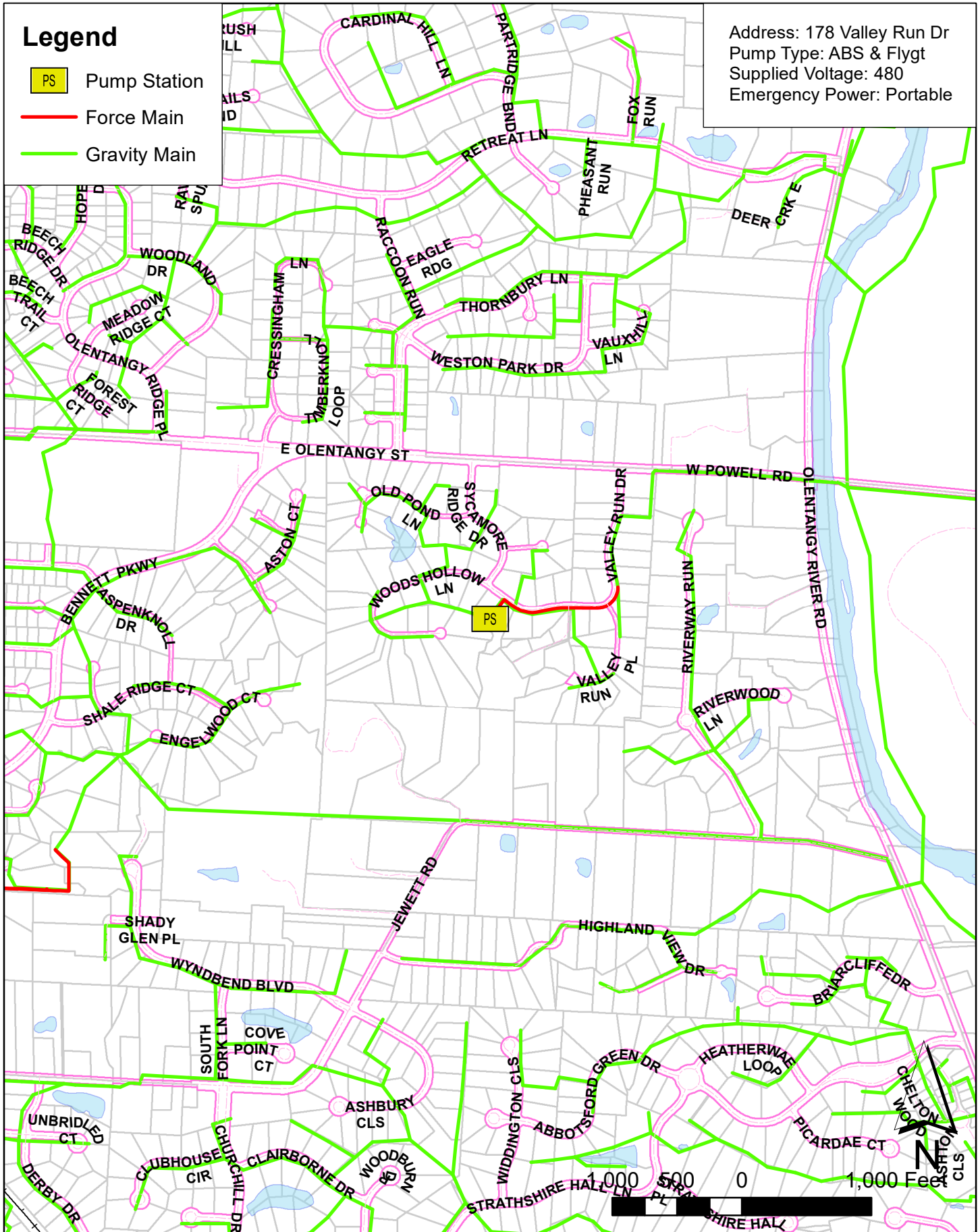


Deer Run Pump Station

Legend




- PS Pump Station
- Force Main
- Gravity Main

Address: 178 Valley Run Dr
 Pump Type: ABS & Flygt
 Supplied Voltage: 480
 Emergency Power: Portable

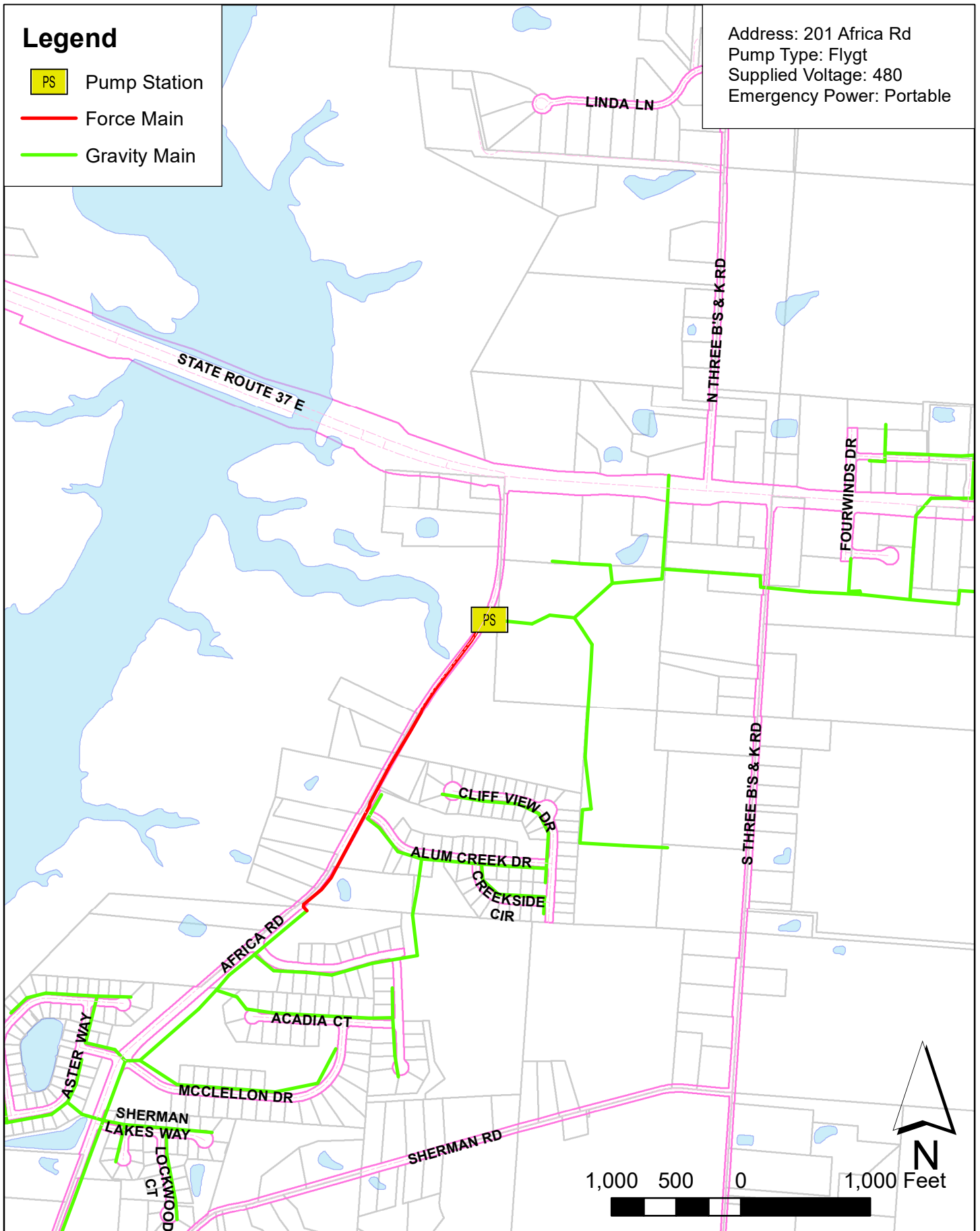


East Alum Creek Pump Station

Legend

-  Pump Station
-  Force Main
-  Gravity Main




Address: 201 Africa Rd
Pump Type: Flygt
Supplied Voltage: 480
Emergency Power: Portable



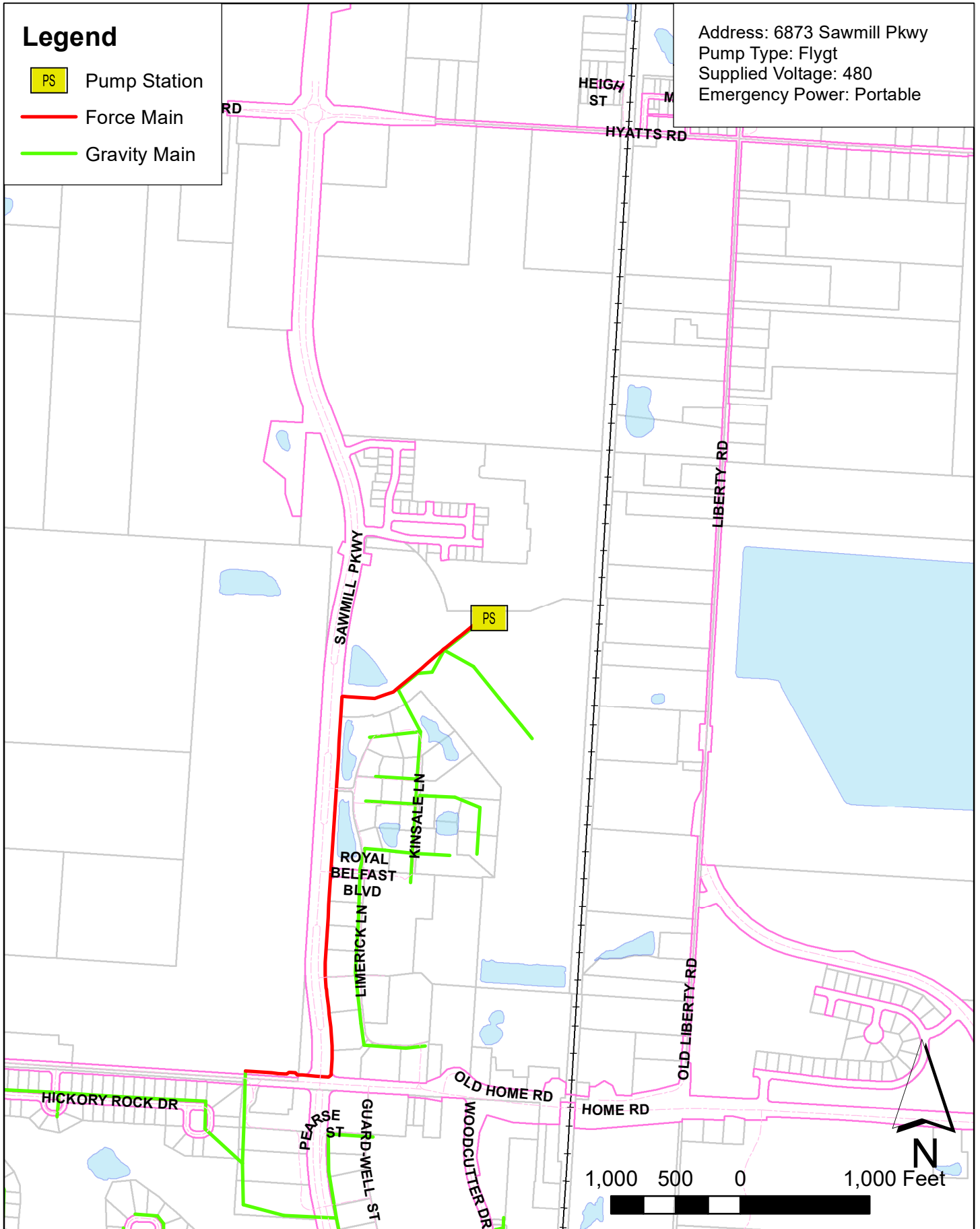
Date: 3/22/2016

Golf Village North Pump Station

Legend

-  Pump Station
-  Force Main
-  Gravity Main

Address: 6873 Sawmill Pkwy
Pump Type: Flygt
Supplied Voltage: 480
Emergency Power: Portable

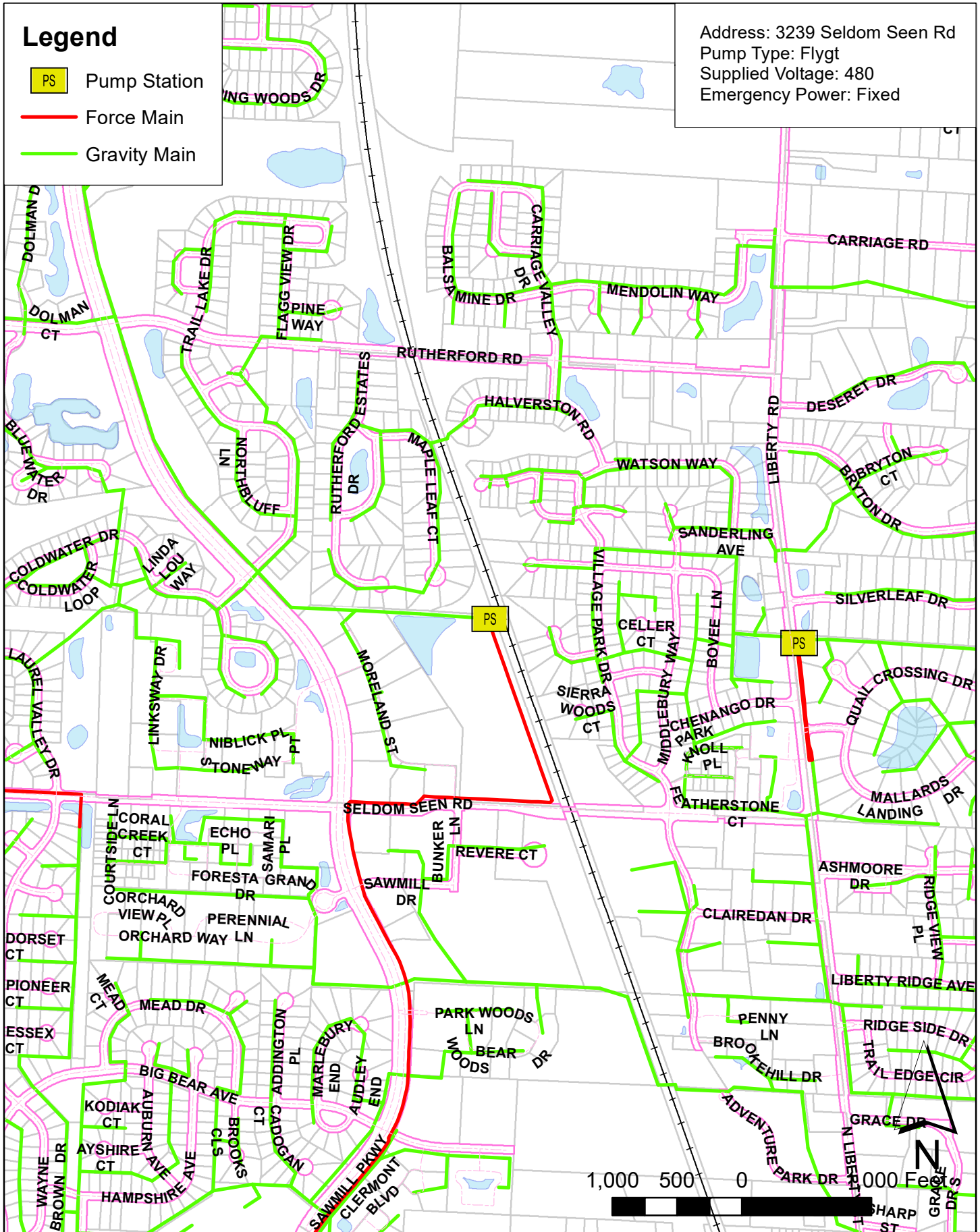


Golf Village Pump Station

Legend




- PS Pump Station
- Force Main
- Gravity Main

Address: 3239 Seldom Seen Rd
 Pump Type: Flygt
 Supplied Voltage: 480
 Emergency Power: Fixed

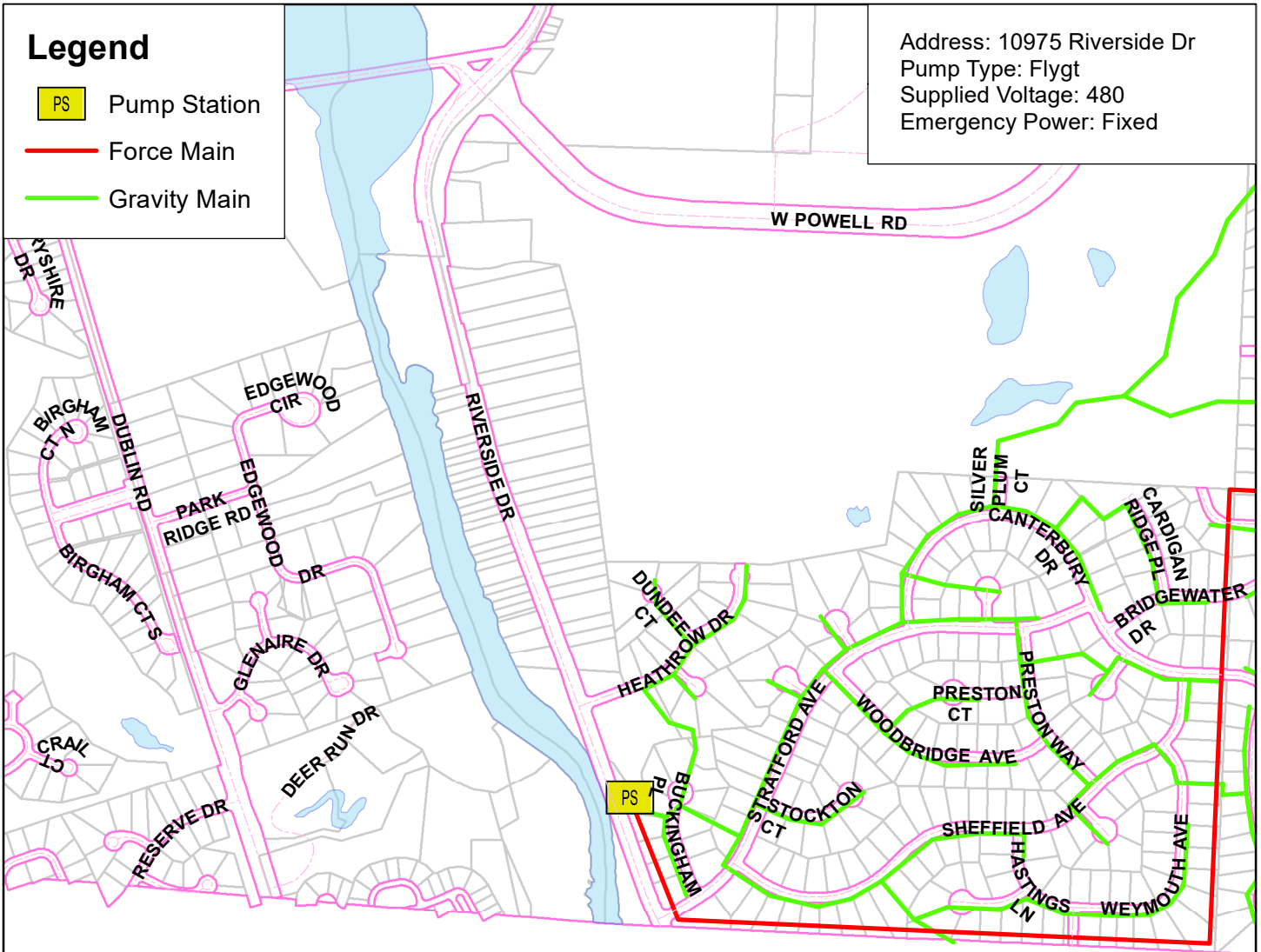


Leather Lips Pump Station

Legend

-  Pump Station
-  Force Main
-  Gravity Main

Address: 10975 Riverside Dr
Pump Type: Flygt
Supplied Voltage: 480
Emergency Power: Fixed

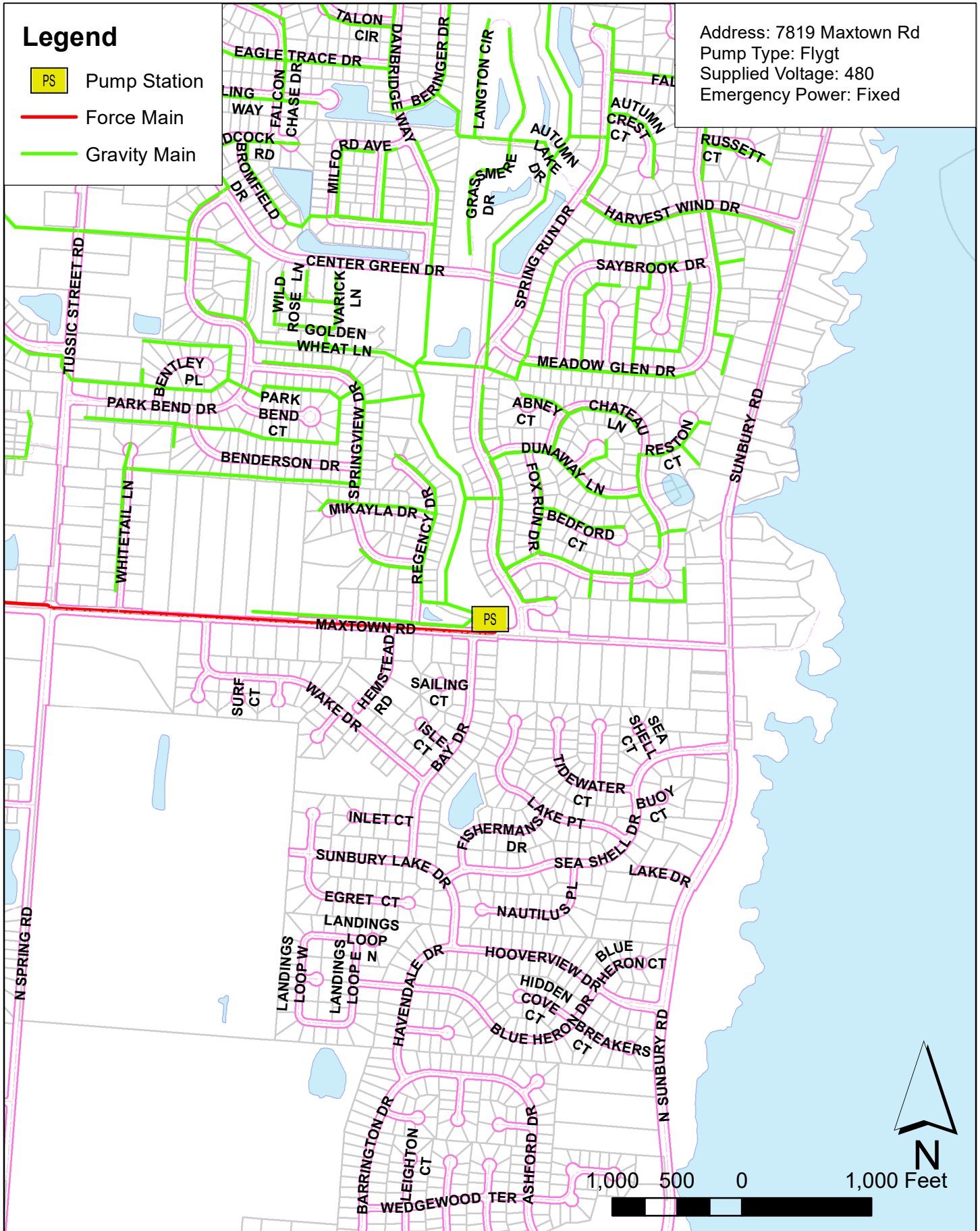


Maxtown Pump Station

Legend





- PS Pump Station
- Force Main
- Gravity Main

Address: 7819 Maxtown Rd
 Pump Type: Flygt
 Supplied Voltage: 480
 Emergency Power: Fixed

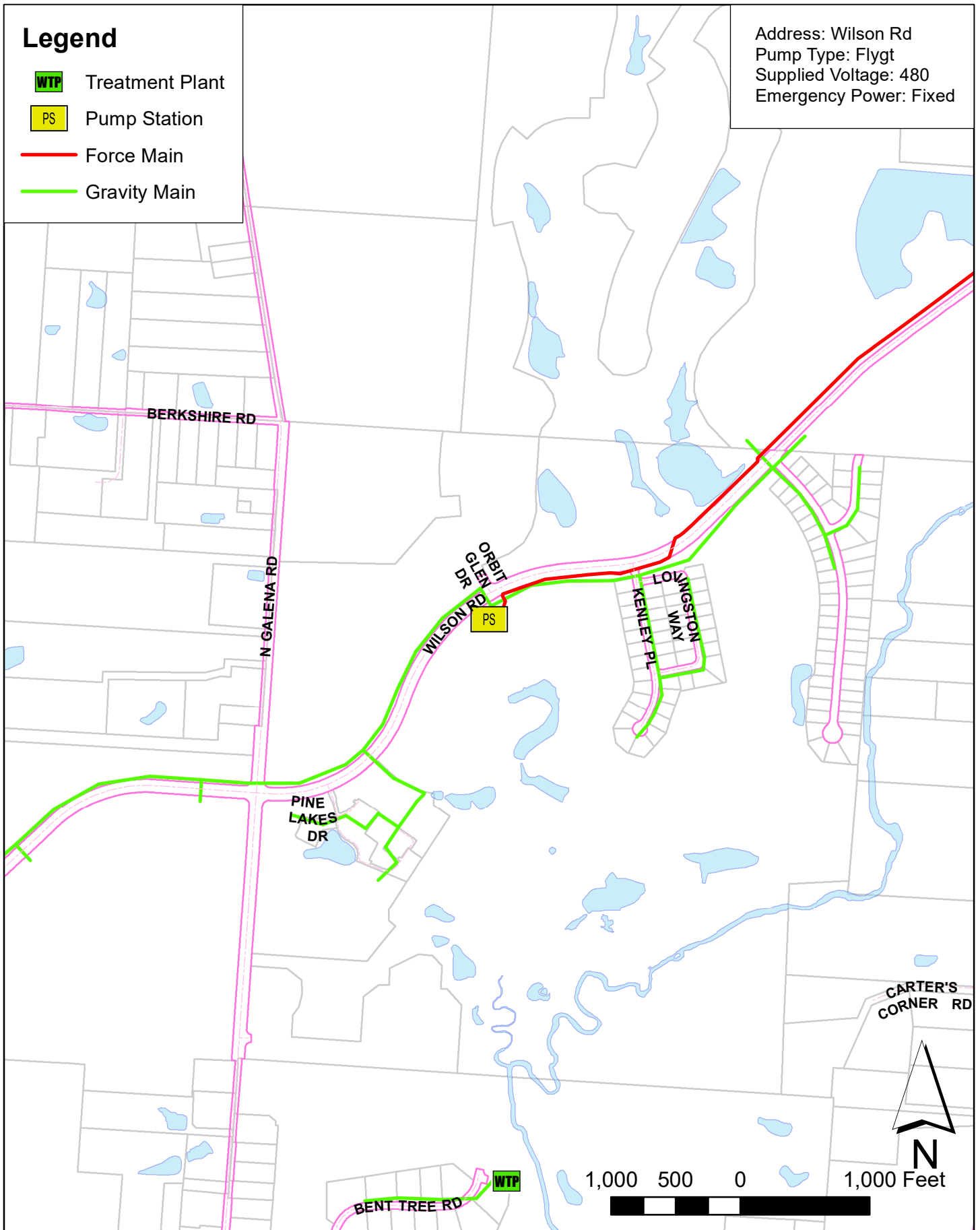


Northstar Pump Station

Legend

-  Treatment Plant
-  Pump Station
-  Force Main
-  Gravity Main

Address: Wilson Rd
Pump Type: Flygt
Supplied Voltage: 480
Emergency Power: Fixed

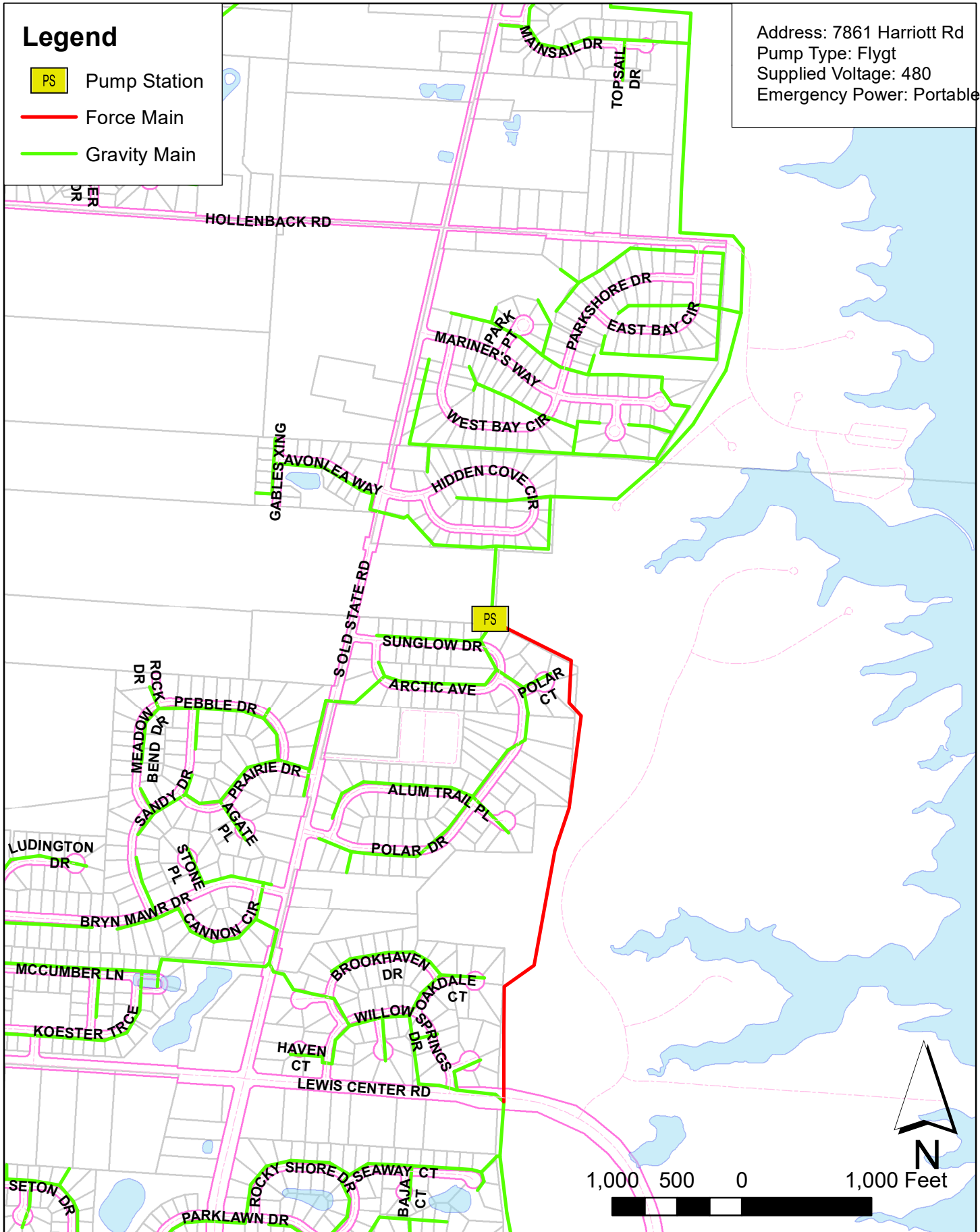


The Oaks Pump Station

Legend

- PS Pump Station
- Force Main
- Gravity Main




Address: 7861 Harriott Rd
 Pump Type: Flygt
 Supplied Voltage: 480
 Emergency Power: Portable

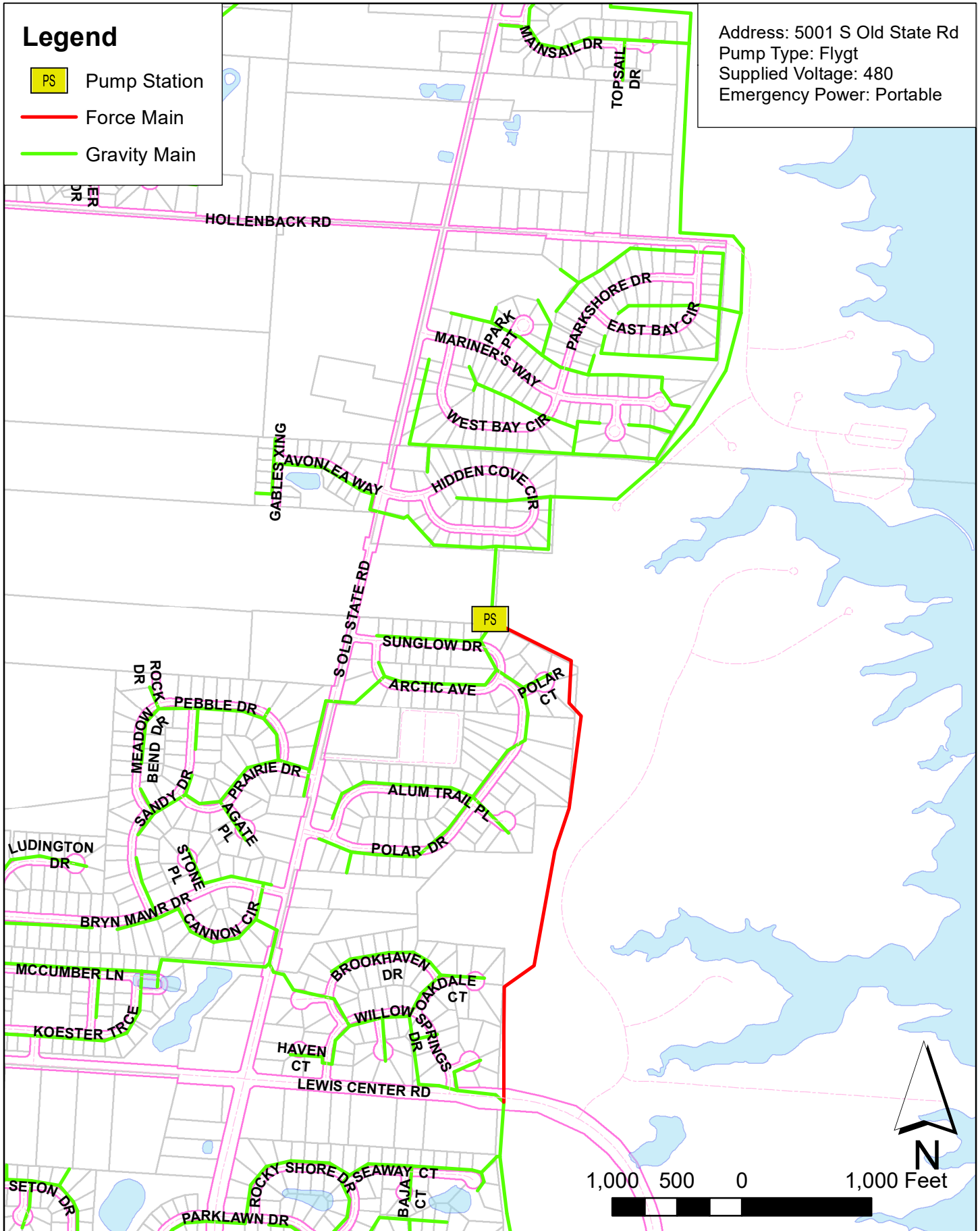


Peachblow Pump Station

Address: 5001 S Old State Rd
Pump Type: Flygt
Supplied Voltage: 480
Emergency Power: Portable

Legend

-  Pump Station
-  Force Main
-  Gravity Main

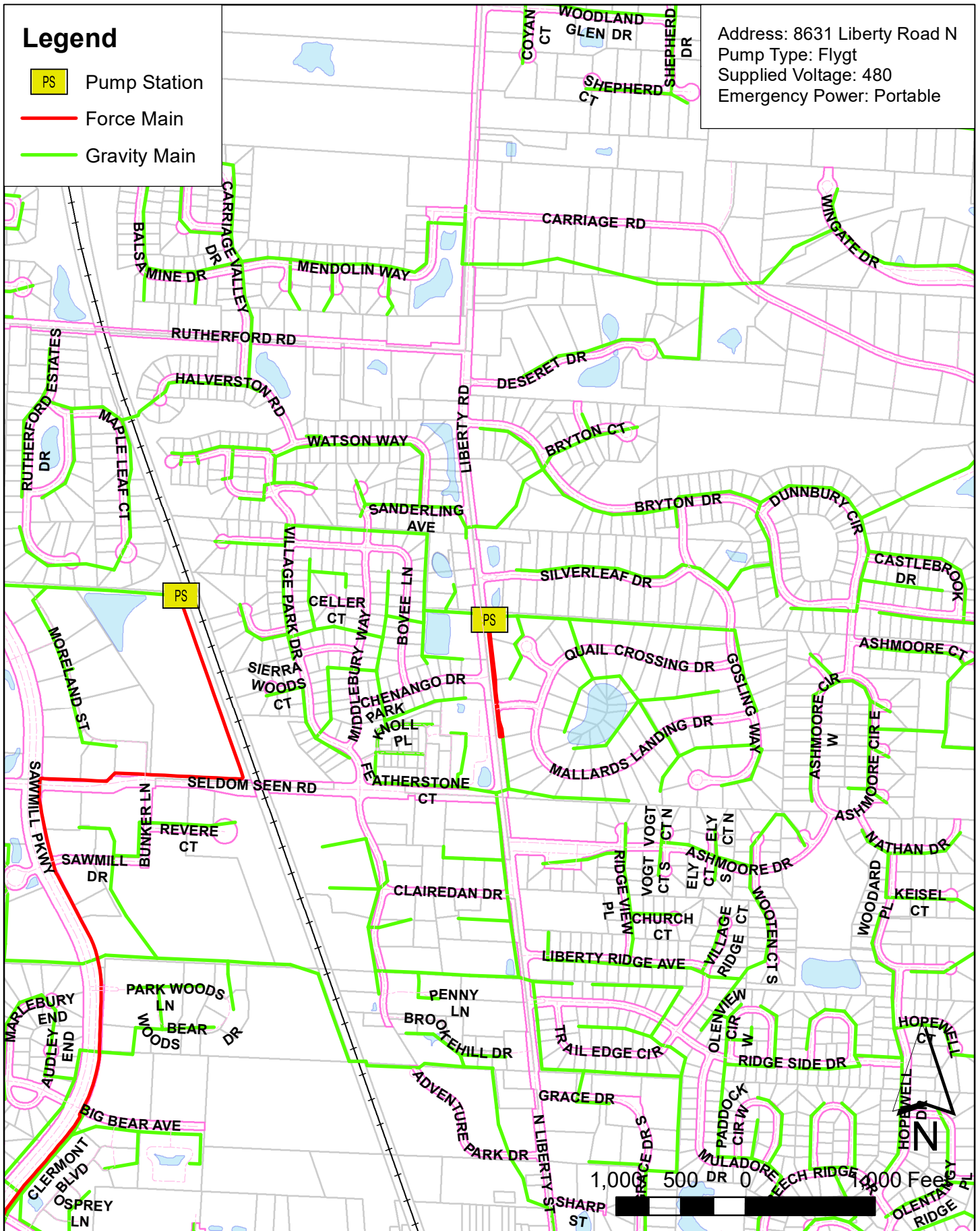


Quail Meadows Pump Station

Legend

- PS Pump Station
- Force Main
- Gravity Main

Address: 8631 Liberty Road N
 Pump Type: Flygt
 Supplied Voltage: 480
 Emergency Power: Portable

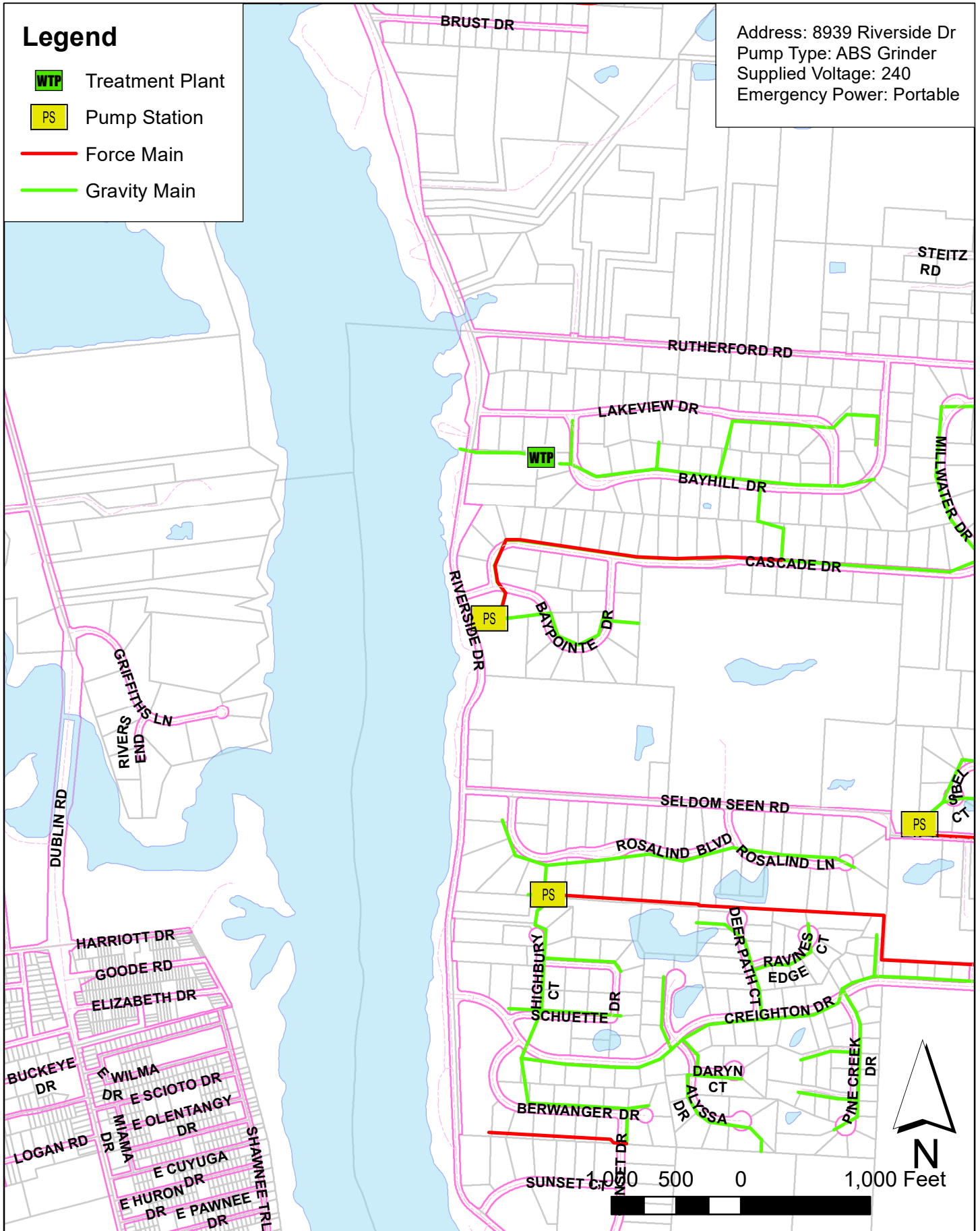


Scioto Bluffs Pump Station

Legend

- WTP Treatment Plant
- PS Pump Station
- Force Main
- Gravity Main

Address: 8939 Riverside Dr
 Pump Type: ABS Grinder
 Supplied Voltage: 240
 Emergency Power: Portable

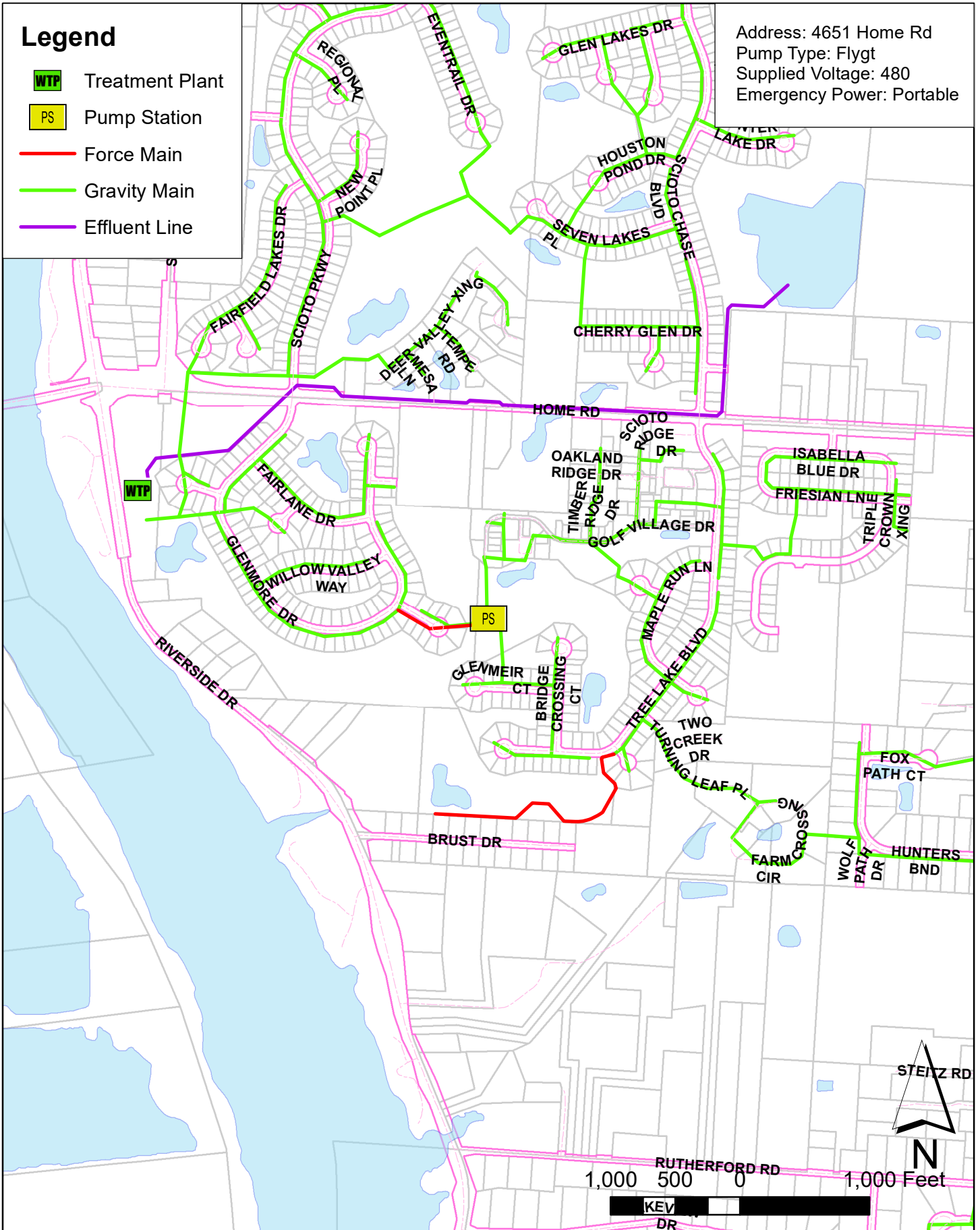


Scioto Reserve Pump Station

Address: 4651 Home Rd
 Pump Type: Flygt
 Supplied Voltage: 480
 Emergency Power: Portable

Legend

- WTP Treatment Plant
- PS Pump Station
- Force Main
- Gravity Main
- Effluent Line

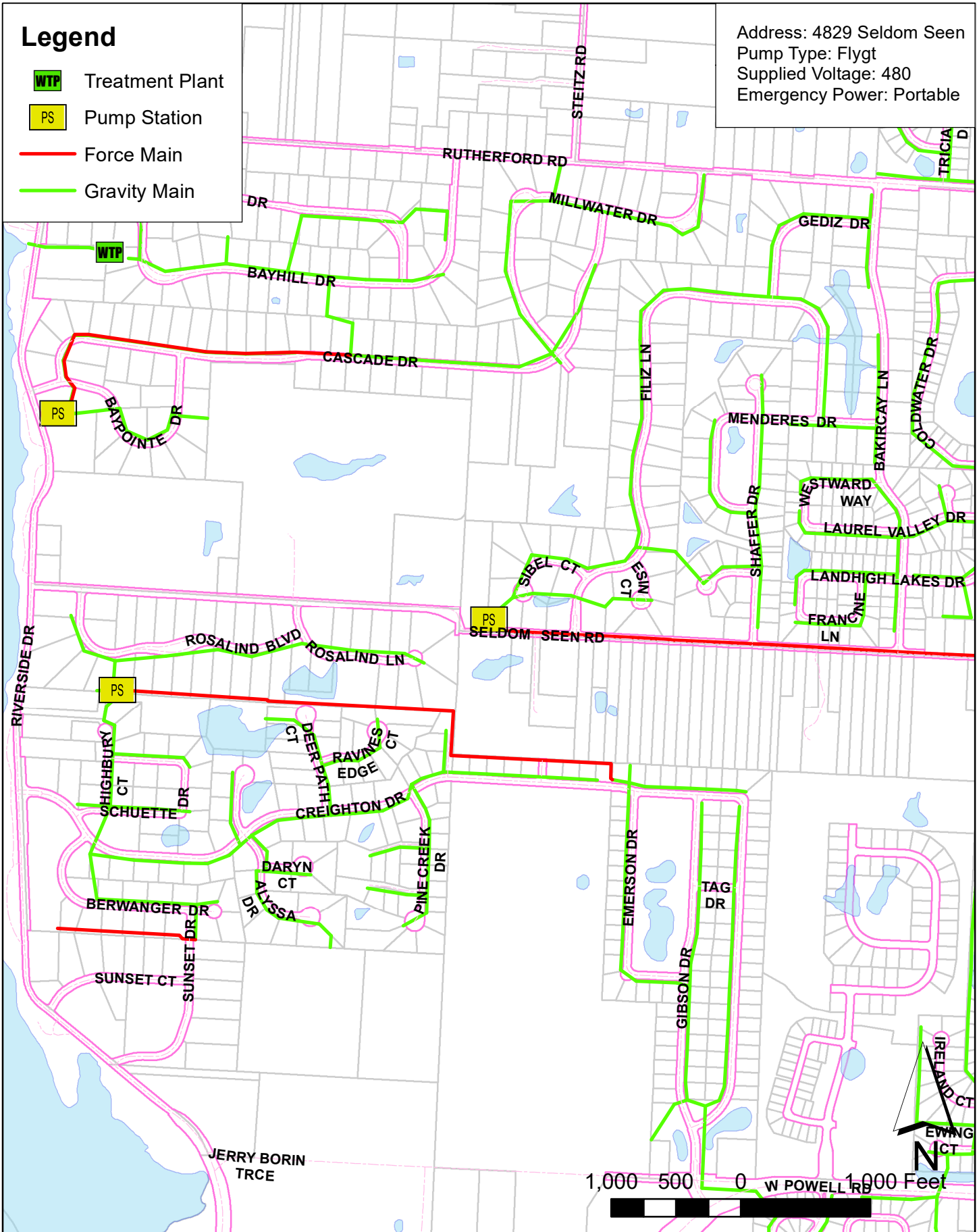


Seldom Seen Pump Station

Legend

- WTP Treatment Plant
- PS Pump Station
- Force Main
- Gravity Main

Address: 4829 Seldom Seen
 Pump Type: Flygt
 Supplied Voltage: 480
 Emergency Power: Portable

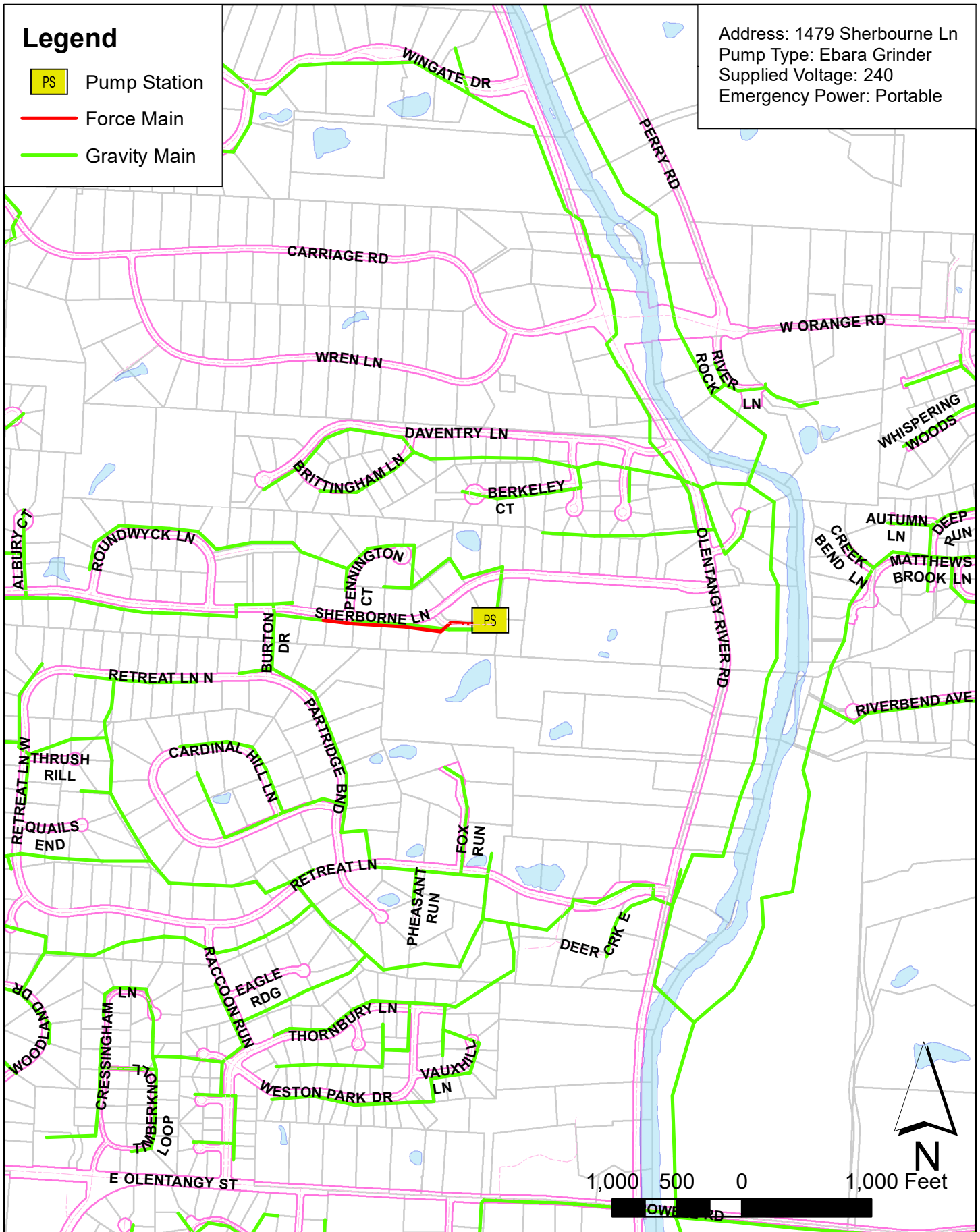


Sherbourne Mews Pump Station

Address: 1479 Sherbourne Ln
 Pump Type: Ebara Grinder
 Supplied Voltage: 240
 Emergency Power: Portable

Legend

- PS Pump Station
- Force Main
- Gravity Main






1,000 500 0 1,000 Feet

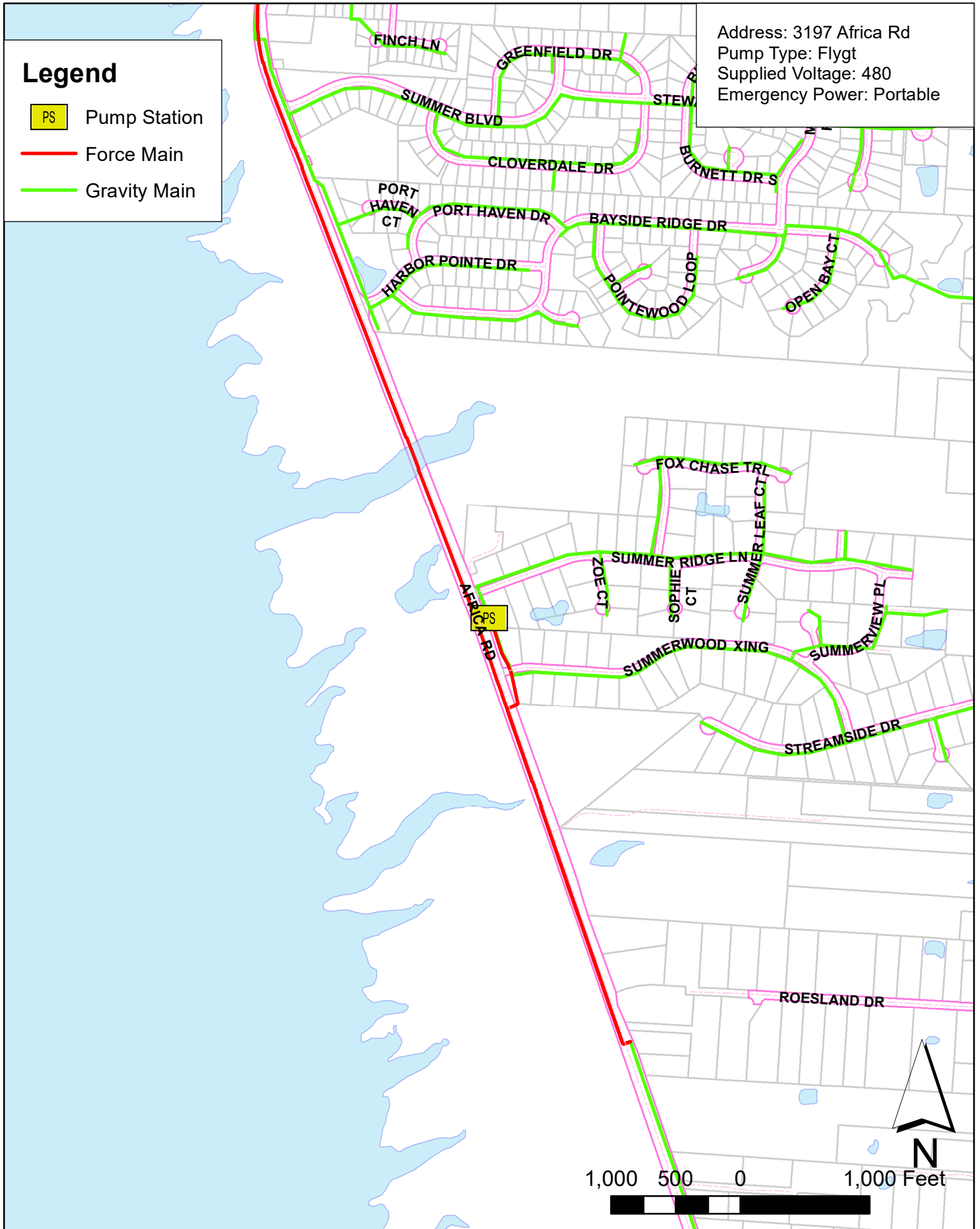
Date: 3/22/2016

Summerwood Pump Station

Address: 3197 Africa Rd
Pump Type: Flygt
Supplied Voltage: 480
Emergency Power: Portable

Legend

-  Pump Station
-  Force Main
-  Gravity Main

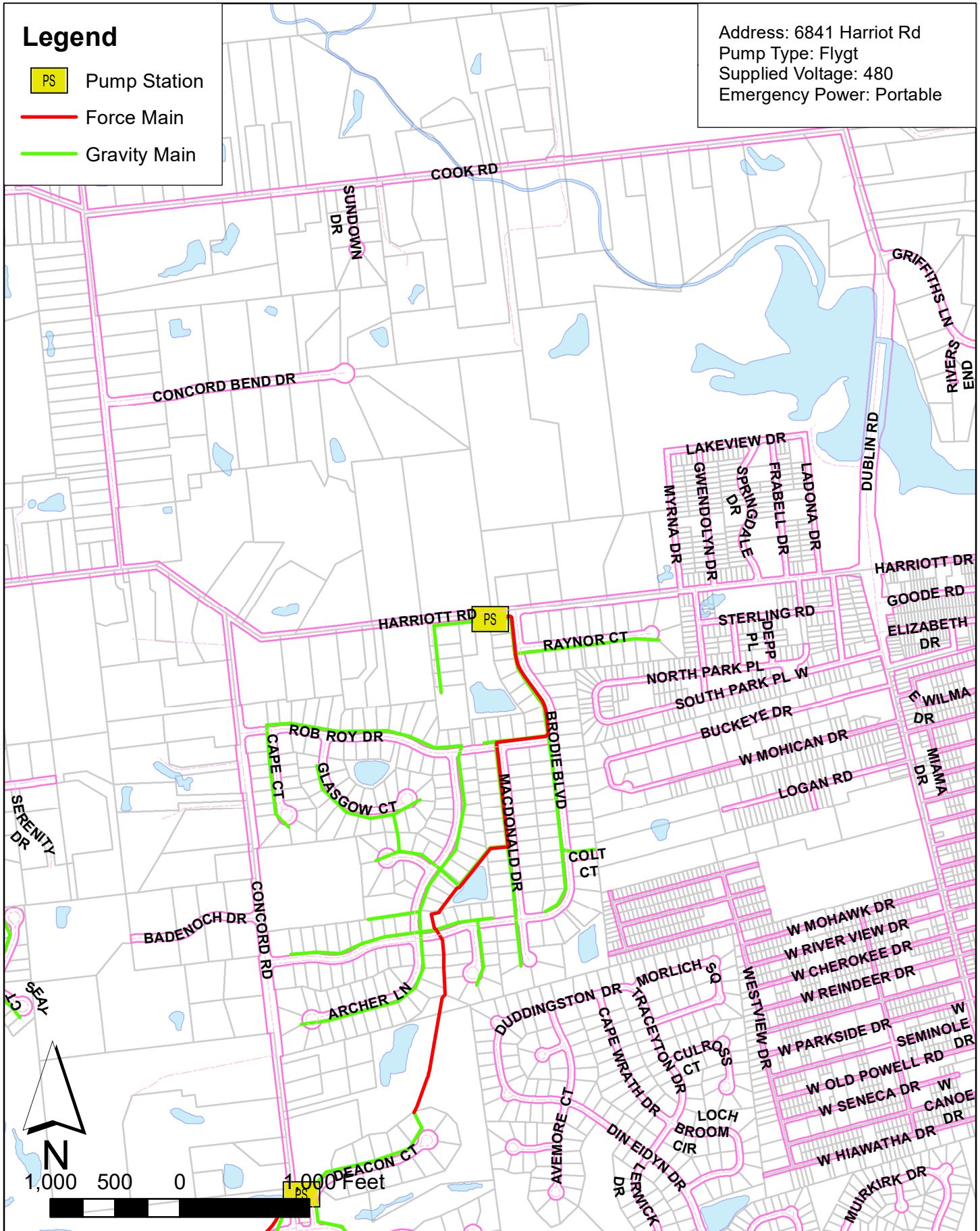


Tartan Fields Phase 20 Pump Station

Address: 6841 Harriot Rd
 Pump Type: Flygt
 Supplied Voltage: 480
 Emergency Power: Portable

Legend




- PS Pump Station
- Force Main
- Gravity Main

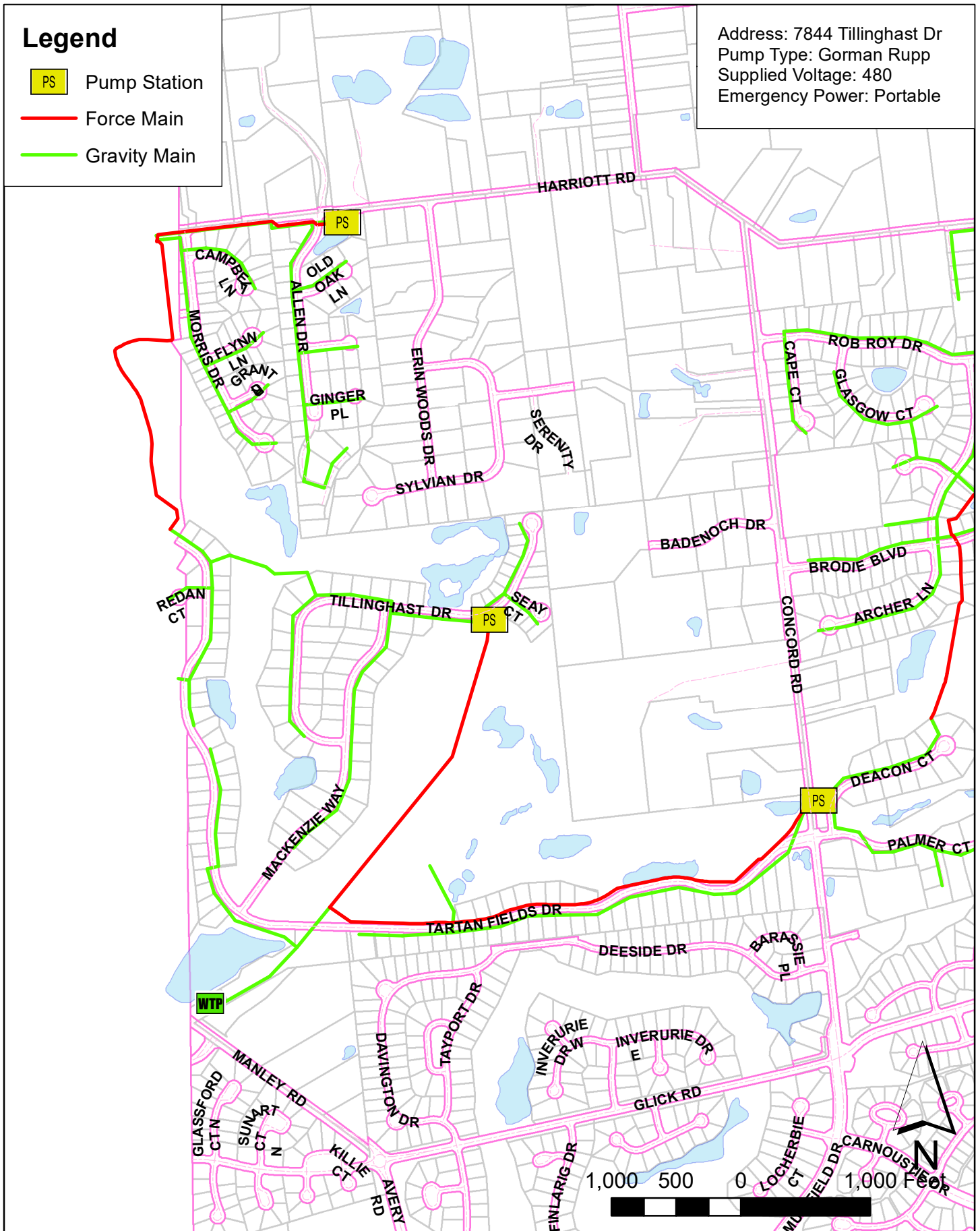


Tillinghast Pump Station

Address: 7844 Tillinghast Dr
Pump Type: Gorman Rupp
Supplied Voltage: 480
Emergency Power: Portable

Legend

-  Pump Station
-  Force Main
-  Gravity Main

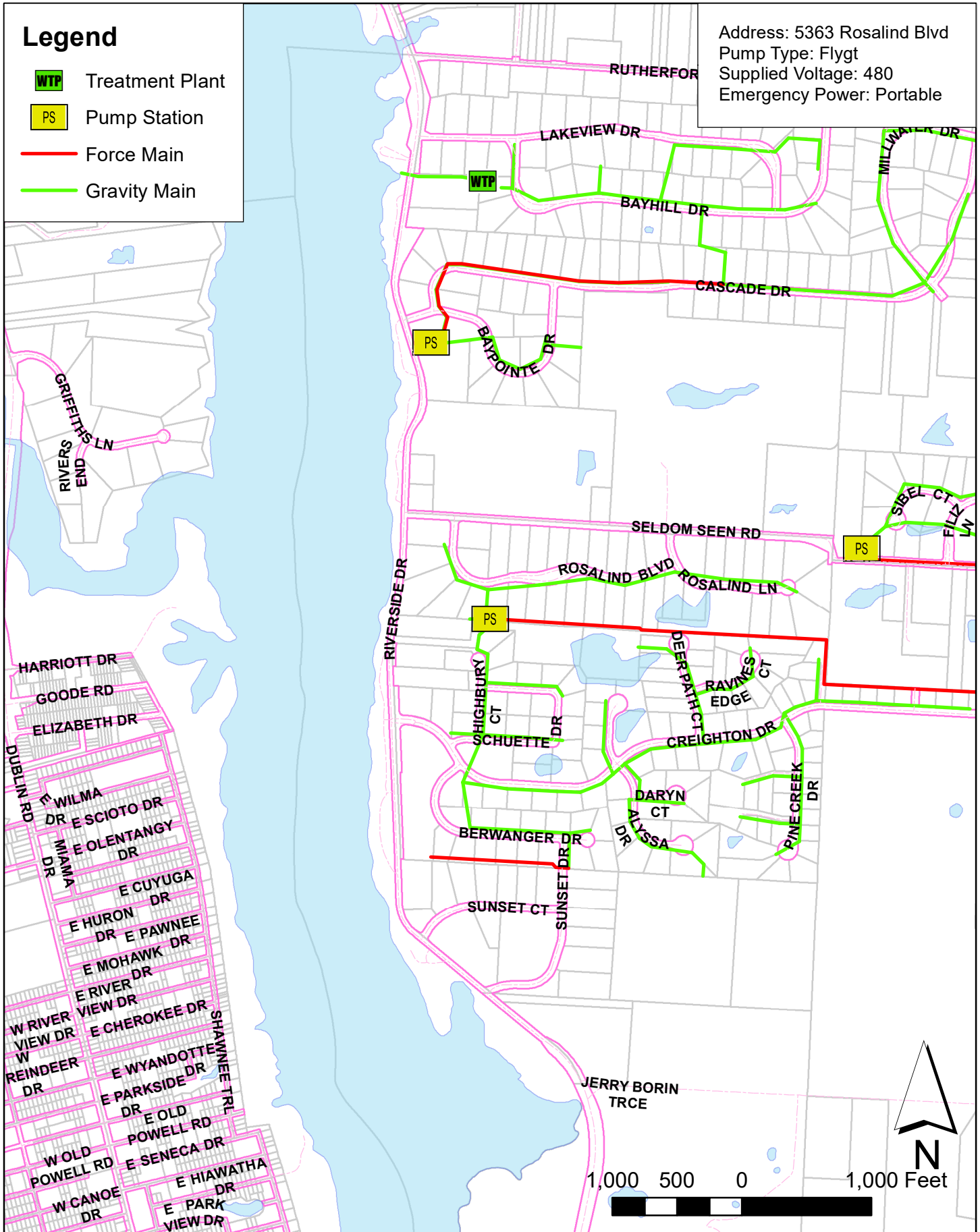


Trotters Gait Pump Station

Address: 5363 Rosalind Blvd
 Pump Type: Flygt
 Supplied Voltage: 480
 Emergency Power: Portable

Legend




- WTP Treatment Plant
- PS Pump Station
- Force Main
- Gravity Main



Vinmar Farms Pump Station

Address: 7869 Vinmar Way
Pump Type: Flygt
Supplied Voltage: 480
Emergency Power: Portable

Legend

-  Pump Station
-  Force Main
-  Gravity Main

